



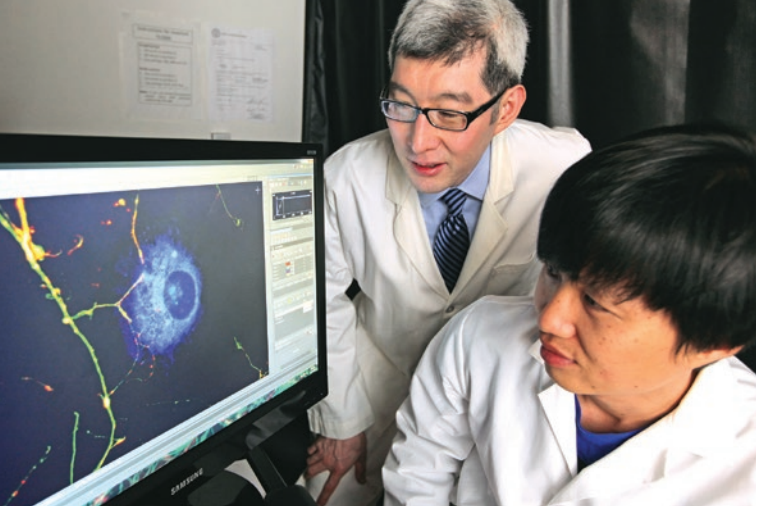
Weill Cornell  
Medicine  
Psychiatry



## Making a Difference

Weill Cornell Medicine  
Department of Psychiatry





## A Leader in Psychiatric Advancements

Weill Cornell Medicine's Psychiatry Department is one of the largest and most prestigious psychiatry programs in the country. Affiliated with NewYork-Presbyterian, we have consistently been recognized as a premier psychiatry program by national surveys and organizations. Our reputation stems from a long and distinguished history of providing outstanding clinical care, cutting-edge research and scholarship, and world-class education by exceptional faculty and staff.

This synergy of clinical care, research, education, and exceptional faculty and staff is offered in an unparalleled collaborative setting in outstanding facilities located at NewYork-Presbyterian/Weill Cornell Medical Center on Manhattan's Upper East Side, and on the historic campus of the NewYork-Presbyterian/Westchester Division in New York's Westchester County.



# The Power of Philanthropy

The field of mental health is complex and evolving, and we strive to remain at the forefront of groundbreaking research and clinical advances that will in turn benefit countless patients nationwide. Philanthropy is critical to this progress.

Private donations can be a catalyst to important work and findings that are truly transformative. Philanthropy has also been instrumental in the development of our core programs, including the Sackler Institute for Developmental Psychobiology. In addition, donations have provided funding for key projects of the Weill Cornell Institute for Geriatric Psychiatry, the DeWitt Wallace Institute for the History of Psychiatry, the Borderline Personality Disorders Institute, the Program for Anxiety and Traumatic Stress Studies, The Youth Anxiety Program, The Center for Autism and the Developing Brain, and the Child and Adolescent Psychiatry Program.

## Philanthropy Enables Breakthrough Research



*Francis S.Y. Lee, M.D., Ph.D., Professor of Psychiatry, Neuroscience, and Molecular Biology, Weill Cornell Medicine*

Early in his career, Dr. Francis Lee used funds from a philanthropic donation to purchase cutting-edge technology that led to the development of one of the first mouse models used to identify a key human genetic variant involved in anxiety disorders. This work led to grants from the National Institute of Mental Health and ultimately earned Dr. Lee the Presidential Early Career Award for Scientists and Engineers. Dr. Lee's groundbreaking work could be the foundation for the development of patient-specific treatments.

For more philanthropic success stories, visit our website at [psychiatry.weill.cornell.edu/about-department/philanthropy](http://psychiatry.weill.cornell.edu/about-department/philanthropy)

# Why Give?

Your gift to the Department of Psychiatry has the power to:

- Recruit and retain the most talented clinicians, researchers, and educators
- Accelerate multiple types of research to improve our understanding of mental illness and develop and disseminate new treatments
- Develop the next generation of experts by providing Fellowship opportunities to gifted clinicians and investigators
- Translate cutting-edge advances in psychiatry to improve clinical care for patients and our communities

## Endowments Provide a Lasting Legacy

An endowed gift provides a naming opportunity for donor recognition and partnership with Weill Cornell Medicine. Your gift principal is invested and only a portion is spent, creating a foundation to support and sustain current programs and the work of future academic leaders.

Endowments can be established to support programs and Fellowships. Often, they are used to create an Endowed Chair to honor exceptional faculty members for their past and potential contributions to the field of psychiatry while supporting their work. Endowed Chairs are critical recruitment tools to attract and retain the most exceptional talent.

## Psychiatry Innovation Fund

An unrestricted gift can be used to initiate exciting and innovative projects in strategic areas central to the department's mission as well as emerging priorities in the field. These include depression and anxiety disorders, psychotic disorders, personality disorders, psychodynamic psychiatry, autism spectrum disorders, child and adolescent psychiatry, and geriatric psychiatry.

## Fellowships

Your gift can help cultivate new talent in the field of mental health. Funds can be provided to support the education and training of the next generation of promising clinicians, investigators, and educators.



## The Next Step

We would welcome an opportunity to meet with you and discuss how your gift can enhance our mission to improve mental health through science, education, and clinical innovation. For more information, please contact:

### **Jack D. Barchas, MD**

*Chairman, Department of Psychiatry*

212.746.3770

[jbarchas@med.cornell.edu](mailto:jbarchas@med.cornell.edu)

### **Jennifer Walsh**

*Senior Administrator, Department of Psychiatry*

212.746.3315

[jaw2015@med.cornell.edu](mailto:jaw2015@med.cornell.edu)

**For more information, visit us at  
[psychiatry.weill.cornell.edu/](http://psychiatry.weill.cornell.edu/)**







*New York-Presbyterian/Weill Cornell Medical Center*  
• New York, New York



*New York-Presbyterian/Westchester Division*  
• White Plains, New York

New York-Presbyterian Psychiatry combines the academic faculty of Weill Cornell Medicine with the world-class facilities of New York-Presbyterian Hospital to advance diagnostic precision and treatment for individuals of all ages. With expertise across all psychiatric disorders, we offer inpatient and outpatient services at three New York City campuses and our historic 214-acre Westchester Division.

We conduct groundbreaking research in neurobiology and genomics, bringing our findings from bench to bedside. We are also training the next generation of psychiatrists, psychologists, nurses, and social workers with an uncompromising commitment to improving the lives of patients and families.